

KOGARAH PUBLIC SCHOOL

SCHOOL INFRASTRUCTURE NSW

LANDSCAPE DOCUMENTATION

DRAWING REGISTER

DRAWING NUMBER	DRAWING NAME	SCALE / SIZE	REVISION
KOPS-GIL-00-00-DR-L-0001	COVER SHEET	-	E
KOPS-GIL-00-00-DR-L-2001	LANDSCAPE MASTERPLAN	1:250 @ A1	B
KOPS-GIL-00-00-DR-L-3001	SCHEMATIC LANDSCAPE PLAN	1:200 @ A1	E
KOPS-GIL-00-00-DR-L-6001	PLANTING PLAN 1	1:200 @ A1	C
KOPS-GIL-00-00-DR-L-6002	PLANTING PLAN 2	1:200 @ A1	B
KOPS-GIL-00-00-DR-L-9001	LANDSCAPE DETAILS	1:20 @ A1	C

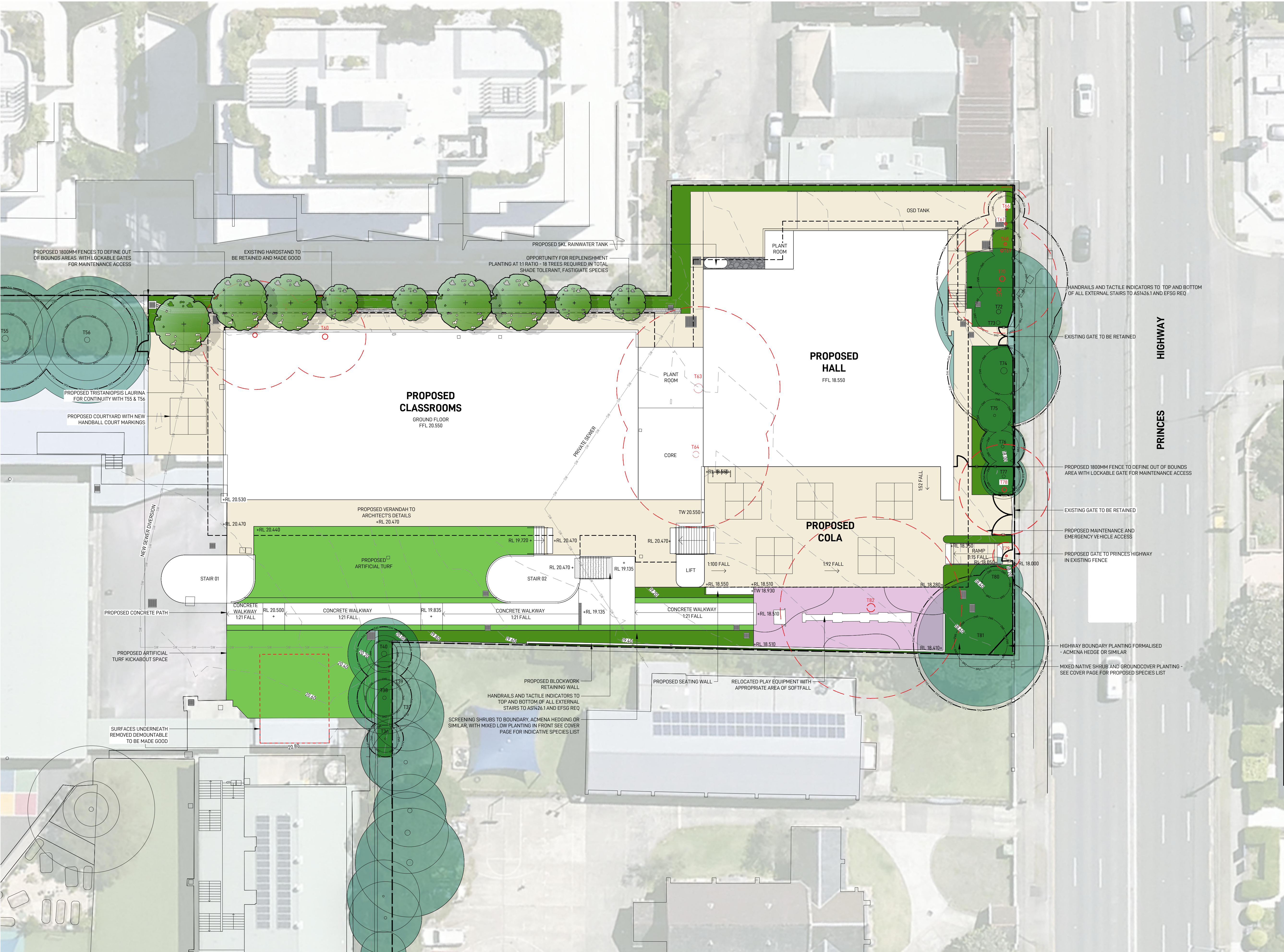
INDICATIVE PLANT PALETTE

CODE	BOTANICAL NAME	COMMON NAME	MATURE HEIGHT	NATIVE	INSTALL SIZE	SPACING	QUANTITY
TREES							
ELA EUM	ELAEOCARPUS EUMUNDI	EUMUNDI QUANDONG	6-8M	√	45L BAG	AS SHOWN	6
ELA RET	ELAEOCARPUS RETICULATUS	BLUEBERRY ASH	4-6M	√	45L BAG	AS SHOWN	5
TRI LAU	TRISTANIOPSIS LAURINA	WATER GUM	8-10M	√	45L BAG	AS SHOWN	4
WAT FLO	WATERHOUSEA FLORIBUNDA	WEeping LILLY PILLY	8-10M	√	45L BAG	AS SHOWN	3
SHRUBS							
ACM SMI	ACMENA SMITHII	LILLY PILLY	2-5M	√	200MM POT	AS SHOWN	141
CAL FLU	CALLISTEMON BOTTLEBRUSH 'FLURO BURST'	FLURO BURST BOTTLEBRUSH	1-1.5M	√	200MM POT	AS SHOWN	30
CAL VIM	CALLISTEMON VIMINALIS 'SCARLET FLAME'	SCARLET FLAME BOTTLEBRUSH	1-1.5M	√	200MM POT	AS SHOWN	34
CHA UNC	CHAMELAUCIUM UNCINATUM 'PURPLE RAIN'	WAX FLOWER	0.6-0.8M	√	200MM POT	AS SHOWN	104
GRE ROS	GREVILLEA ROSMARINIFOLIA 'CRIMSON VILLEA'	ROSEMARY GREVILLEA	0.8M	√	200MM POT	AS SHOWN	116
SYZ AUS	SYZYGIIUM AUSTRALE	BRUSH CHERRY	8-10M	√	45L BAG	AS SHOWN	118
GROUNDCOVERS & GRASSES							
CHR DES	CHRYSOCEPHALUM 'DESERT FLAME'	PAPER DAISY	0.15-0.25M	√	150MM POT	5 / M ²	64
DIA CAE	DIANELLA CAERULEA	BLUE FLAX LILY	0.6M	√	150MM POT	6 / M ²	191
DIA LIT	DIANELLA 'LITTLE JESS'	FLAX LILY	0.4M	√	150MM POT	6 / M ²	124
DIC REP	DICHONDRA REPENS	KIDNEY WEED	0.2M	√	150MM POT	8 / M ²	17
ERE GLA	EREMOPHILA GLABRA PROSTRATE 'BLUE HORIZON	EMU BUSH	0.25M	√	150MM POT	5 / M ²	64
GRE JUN	GREVILLEA RHYOLITICA X JUNIPERINA	CHERRY CLUSTER	0.5M	√	150MM POT	5 / M ²	51
LIB PAN	LIBERTIA PANICULATA	GRASS FLAG	0.3-0.5M	√	150MM POT	5 / M ²	151
LIR AME	LIRIOPE 'AMETHYST'	BIG BLUE LILYTURF	0.4M		150MM POT	7 / M ²	187
LIR JUS	LIRIOPE 'JUST RIGHT'	LILY TURF	0.5M		150MM POT	7 / M ²	323
LOM LIT	LOMANDRA CONFERTIFOLIA 'LITTLE CON'	MAT RUSH	0.4M	√	150MM POT	6 / M ²	119
MYO PAR	MYOPORUM PARVIFOLIUM	CREEPING BOOBIALLA	0.2M	√	150MM POT	5 / M ²	127
OPH JAP	OPHIOPOGON JAPONICUS 'NANA'	DWARF MONDO GRASS	0.1M		150MM POT	9 / M ²	26
PRA PED	PRATIA PEDUNCULATA	WHITE STAR CREEPER	0.3M	√	150MM POT	5 / M ²	15
VIO HED	VIOLA HEDERACEA	NATIVE VIOLET	0.2M	√	150MM POT	8 / M ²	17
WES MUN	WESTRINGIA 'MUNDI'	DWARF COASTAL ROSEMARY	0.4M	√	150MM POT	5 / M ²	69

*NOTE: TREE REPLENISHMENT AS RECOMMENDED BY ARBORIST REQUIRES 18 TREES TOTAL



ISSUE	DATE	DESCRIPTION	DRAWN	CHECKED
A	07.02.25	100% SCHEMATIC	QN	RL
B	14.03.25	REF	QN	RL



LEGEND	
FFL 00.00	FINISHED FLOOR LEVEL
+ EX 00.00	EXISTING SPOT LEVEL
+ RL 00.00	PROPOSED SPOT LEVEL
---	EXTENT OF WORKS BOUNDARY
---	PROPOSED FENCE TO ARCHITECT'S DETAILS
---	LINE OF BUILDING OVERHEAD
---	APPROXIMATE LOCATION OF SEWER LINES
---	STRUCTURAL ROOT ZONE LINE
---	TREE PROTECTION ZONE LINE
---	PROPOSED GARDEN BED
---	PROPOSED SYNTHETIC TURF
---	PROPOSED CONCRETE HARDSTAND
---	PROPOSED GRAVEL
---	EXISTING TREES TO BE RETAINED REFER TO EXISTING TREE SCHEDULE FOR TREE SPECIES AND HEIGHTS
---	EXISTING TREES TO BE REMOVED
---	PROPOSED TREES REFER TO INDICATIVE PLANT SCHEDULE ON DRAWING KOPS-GIL-00-00-DR-L-0001 FOR TREE SPECIES
---	STORMWATER PIT TO ENGINEER'S DETAILS
---	STRIP DRAIN TO ENGINEER'S DETAILS

EXISTING TREE SCHEDULE

ID	BOTANICAL NAME (COMMON NAME)	EXISTING HEIGHT	PROPOSED ACTION
T10*	EUCALYPTUS ELATA (RIVER PEPPERMINT)	17M	REMOVE
T11*	HAKEA SPP. (NEEDLE BUSH)	3M	REMOVE
T14*	ACACIA BAILEYANA (COOTAMUNDRA WATTLE)	5M	REMOVE
T23*	ACACIA SPP. (WATTLE SPECIES)	14M	REMOVE
T36	LEPTOSPERMUM SPP. (TEA TREE)	5M	RETAINED
T37	TRISTANIOPSIS LAURINA (WATER GUM)	5M	RETAINED
T38	CALLISTEMON VIMINALIS (BOTTLEBRUSH)	8M	RETAINED
T39	TRISTANIOPSIS LAURINA (WATER GUM)	8M	RETAINED
T40	TRISTANIOPSIS LAURINA (WATER GUM)	4M	RETAINED
T53*	MELIA AZEDERACH (WHITE CEDAR)	14M	REMOVE
T54*	MELIA AZEDERACH (WHITE CEDAR)	12M	REMOVE
T55	TRISTANIOPSIS LAURINA (WATER GUM)	14M	RETAINED
T56	TRISTANIOPSIS LAURINA (WATER GUM)	14M	RETAINED
T57	TRISTANIOPSIS LAURINA (WATER GUM)	17M	REMOVE
T60	TRISTANIOPSIS LAURINA (WATER GUM)	16M	REMOVE
T61	MELIA AZEDERACH (WHITE CEDAR)	3M	REMOVE
T63	TRISTANIOPSIS LAURINA (WATER GUM)	13M	REMOVE
T64	EUCALYPTUS MICROCORYS (TALLOWWOOD)	24M	REMOVE
T66	CALLISTEMON VIMINALIS (BOTTLEBRUSH)	5M	REMOVE
T67	PITTSOPORUM UNULATUM (PITTSOPORUM)	5M	REMOVE
T68	MELALEUCA STYPHELOIDES (PRICKLY-LEAVED PAPERBARK)	6M	REMOVE
T69	PITTSOPORUM UNULATUM (PITTSOPORUM)	5M	REMOVE
T70	EUCALYPTUS TORELLIANA (CADAGHI)	15M	REMOVE
T71	MELALEUCA STYPHELOIDES (PRICKLY-LEAVED PAPERBARK)	4M	REMOVE
T72	CORYMBIA MACULATA (SPOTTED GUM)	18M	RETAINED
T74	LOPHOSTEMON CONFERTUS (BRUSH BOX)	15M	RETAINED
T75	CALLISTEMON VIMINALIS (BOTTLEBRUSH)	7M	RETAINED
T76	CALLISTEMON VIMINALIS (BOTTLEBRUSH)	7M	RETAINED
T77	MELALEUCA STYPHELOIDES (PRICKLY-LEAVED PAPERBARK)	8M	RETAINED
T78	LOPHOSTEMON CONFERTUS (BRUSHBOX)	12M	REMOVE
T79	HAKEA SPP. (NEEDLE BUSH)	5M	REMOVE
T80	HAKEA SPP. (NEEDLE BUSH)	5M	RETAINED
T81	LOPHOSTEMON CONFERTUS (BRUSHBOX)	14M	RETAINED
T82	ANGOPHORA COSTATA (RED GUM)	24M	REMOVE

EXISTING TREE HEIGHTS AND SPECIES SOURCED FROM PRELIMINARY ARBORICULTURAL REPORT BY MCARDLE ARBORICULTURAL CONSULTANCY DATED 8TH MAY 2024.

TREES MARKED WITH AN ASTERISK* ARE OUTSIDE THE PROPOSED WORKS ZONE AND NOT SHOWN ON THIS PLAN. REMOVAL FOR THESE SPECIES HAS BEEN RECOMMENDED BY THE ARBORIST DUE TO EXEMPTIONS, SAFETY AND TOXICITY CONCERNS. TREES OUTSIDE PROPOSED WORKS ZONE THAT ARE RECOMMENDED TO BE RETAINED HAVE NOT BEEN LISTED ABOVE.

LANDSCAPE ARCHITECT

GROUND INK
LANDSCAPE ARCHITECTS

SUITE 19, 56 NERIDAH ST, CHATSWOOD NSW 2067 PH. (02) 9411 3279
WWW.GROUNDINK.COM.AU ABN 55 163 025 456 ACN 163 025 456
© GROUND INK PTY LTD THIS DESIGN AND DRAWING IS PROTECTED BY COPYRIGHT.

NOTE

VERIFY ALL DIMENSIONS ON SITE BEFORE COMMENCING WORK. REPORT ALL DISCREPANCIES TO LANDSCAPE ARCHITECT PRIOR TO CONSTRUCTION. FIGURED DIMENSIONS TO BE TAKEN IN PREFERENCE TO SCALED DRAWINGS. ALL WORK IS TO CONFORM TO RELEVANT AUSTRALIAN STANDARDS AND OTHER CODES AS APPLICABLE. LOCATION OF UNDERGROUND SERVICES TO BE PROVEN ON SITE AND PROTECTED IF NECESSARY PRIOR TO CONSTRUCTION. DIAL BEFORE YOU DIG. PLANT SPECIES AND QUANTITIES SHOWN ARE INDICATIVE ONLY AND ARE SUBJECT TO CHANGE BASED ON FUTURE PROJECT REQUIREMENTS.

ISSUE	DATE	DESCRIPTION	DRAWN	CHECKED
A	19.12.24	100% SCHEMATIC	AG	RL
B	29.01.25	100% SCHEMATIC	AG	RL
C	07.02.25	100% SCHEMATIC	HI	RL
D	17.02.25	100% SCHEMATIC	QN	RL
E	14.03.25	REF	QN	RL

DRAWING TITLE

SCHEMATIC LANDSCAPE PLAN

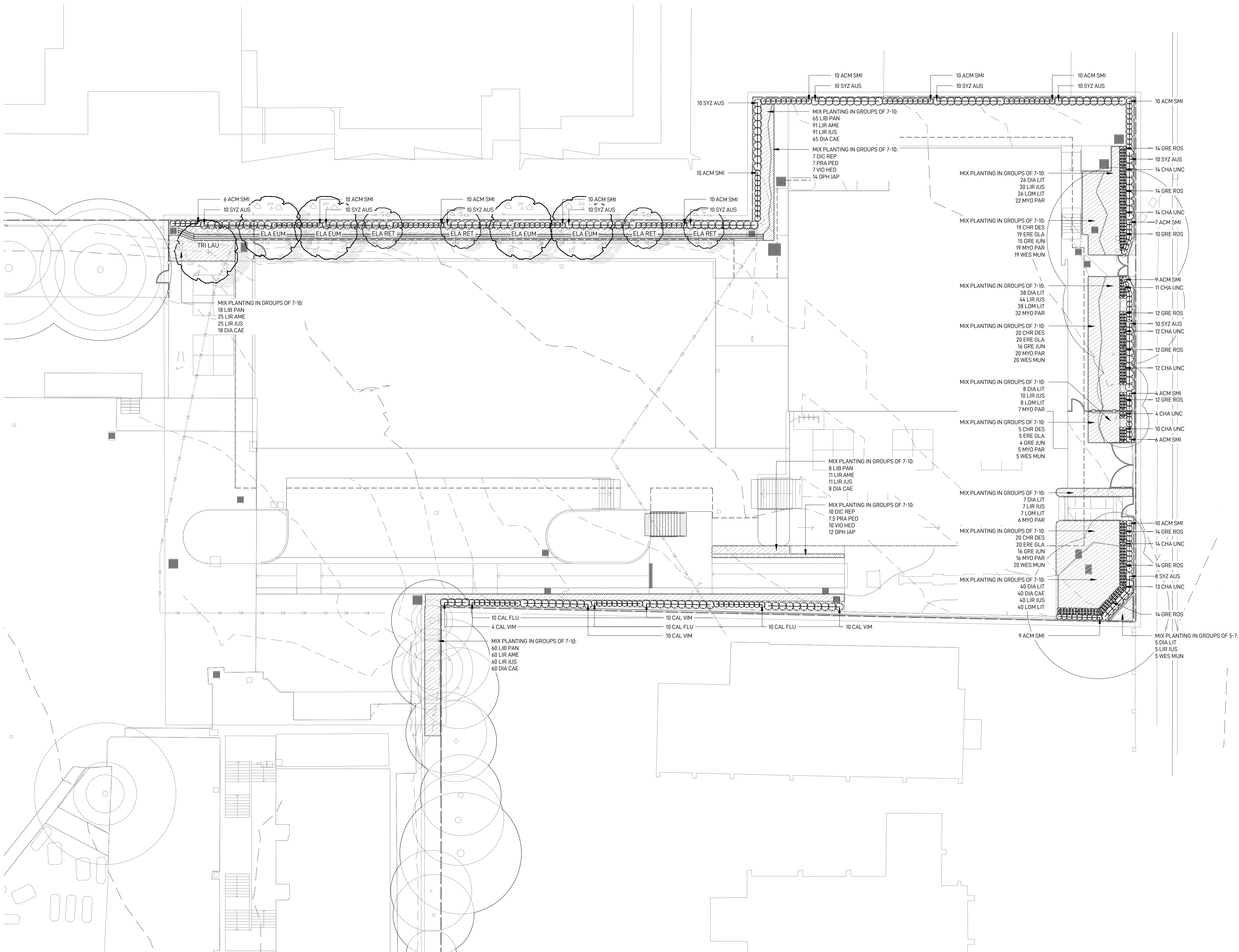
DRAWING NUMBER
KOPS-GIL-00-00-DR-L-3001

PROJECT
KOGARAH PUBLIC SCHOOL
248 GLADSTONE STREET, KOGARAH, NSW 2217

SCALE 1:200
0 1 2 3 4 5M



REV
E




NOTE

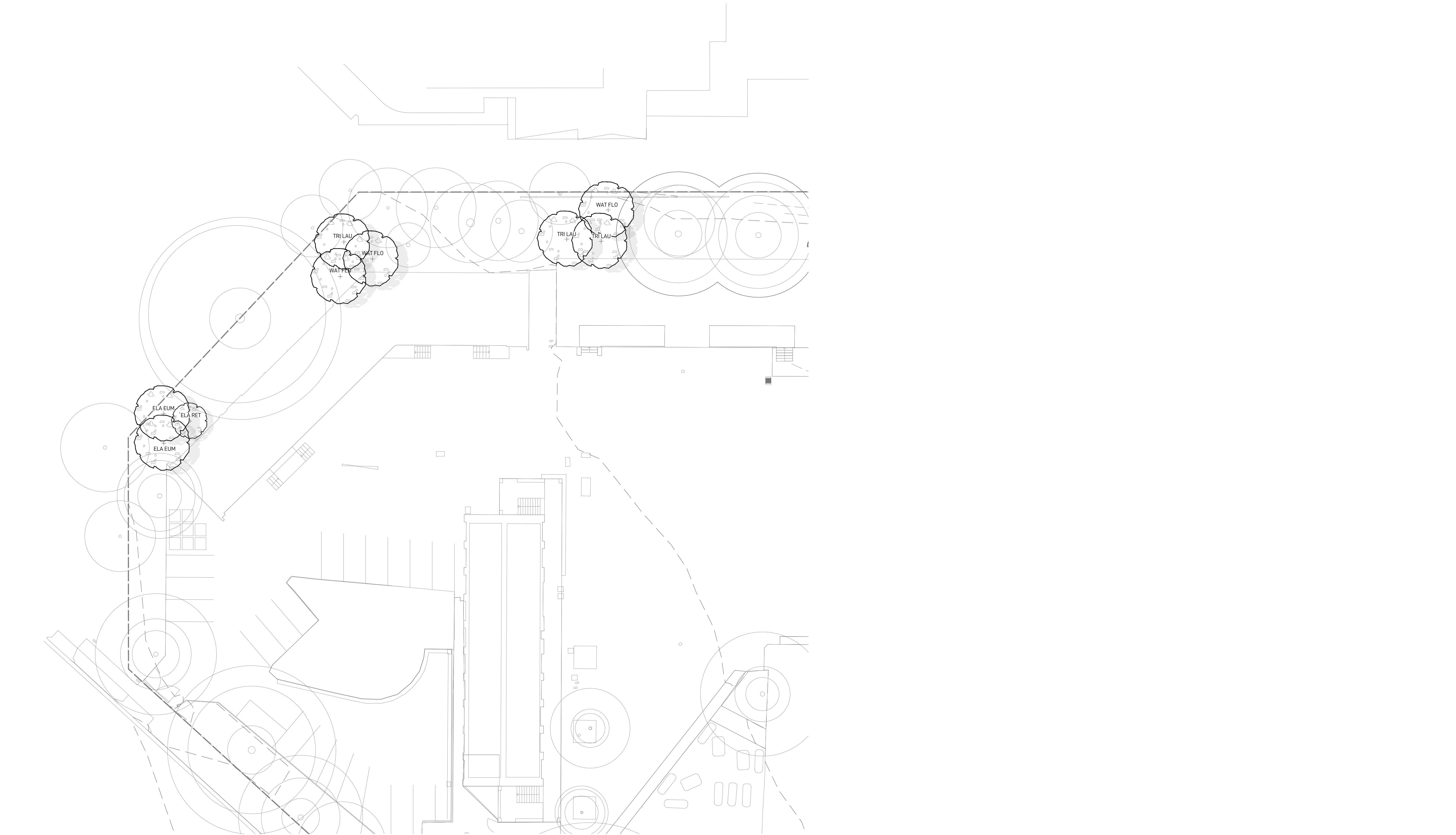
VERIFY ALL DIMENSIONS ON SITE BEFORE COMMENCING WORK. REPORT ALL DISCREPANCIES TO LANDSCAPE ARCHITECT PRIOR TO CONSTRUCTION. FIGURED DIMENSIONS TO BE TAKEN IN PREFERENCE TO SCALED DRAWINGS. ALL WORK IS TO CONFORM TO RELEVANT AUSTRALIAN STANDARDS AND OTHER CODES AS APPLICABLE. LOCATION OF UNDERGROUND SERVICES TO BE PROVEN ON SITE AND PROTECTED IF NECESSARY. PRIOR TO CONSTRUCTION, DIAL BEFORE YOU DIG. PLANT SPECIES AND QUANTITIES SHOWN ARE INDICATIVE ONLY AND ARE SUBJECT TO CHANGE BASED ON FUTURE PROJECT REQUIREMENTS.

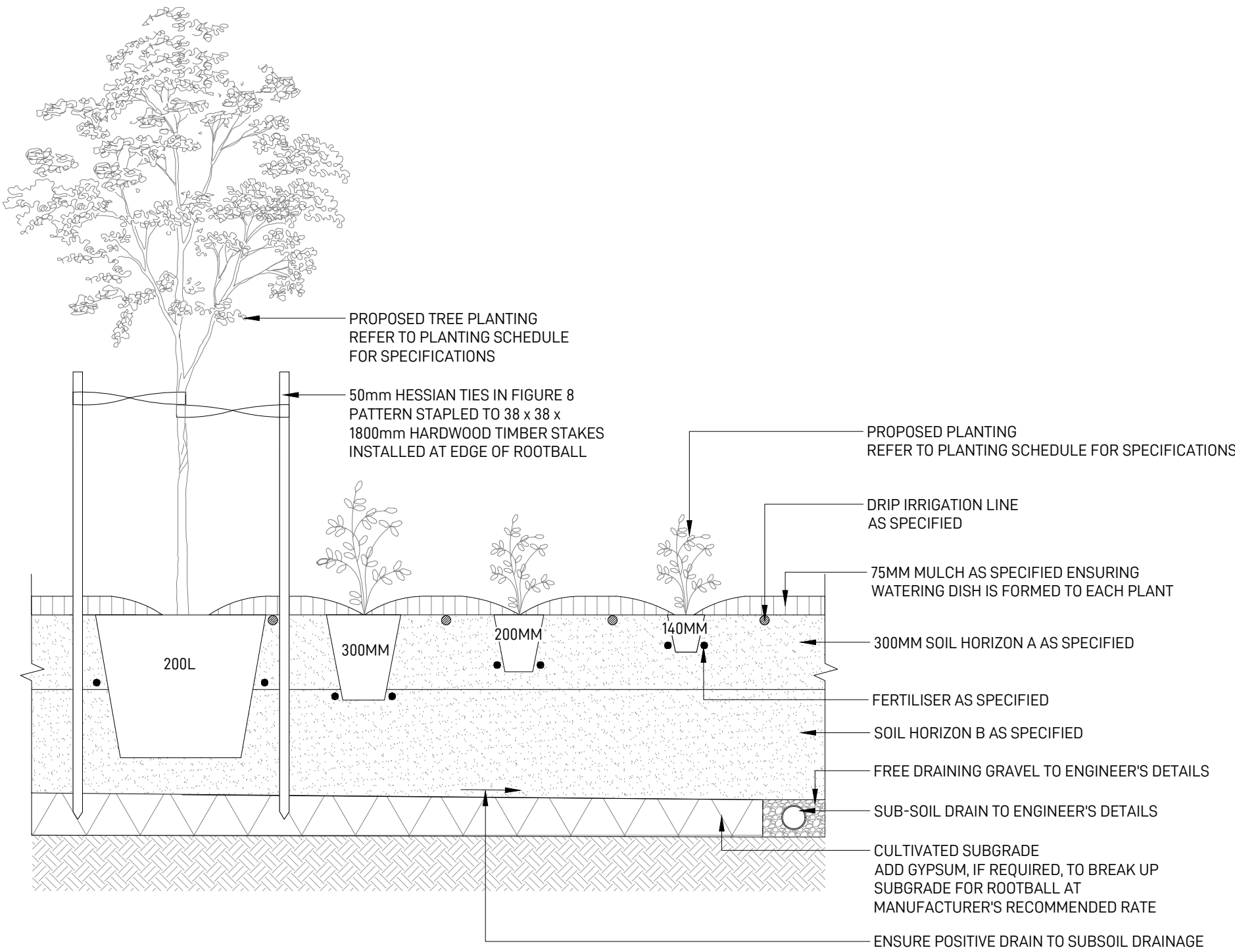
ISSUE	DATE	DESCRIPTION	DRAWN	CHECKED
A	07.02.25	100% SCHEMATIC	HN	RL
B	17.02.25	100% SCHEMATIC	QN	RL
C	14.03.25	REF	QN	RL

DRAWING TITLE

PLANTING PLAN 1

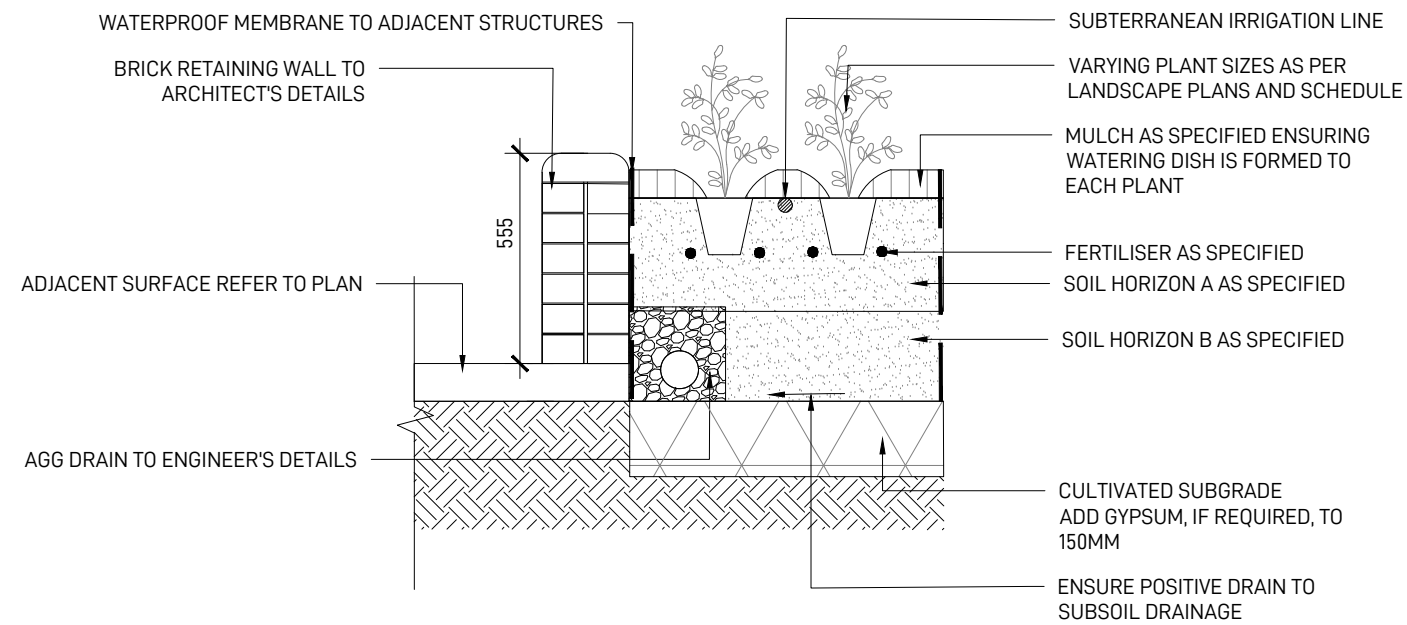
	DRAWING NUMBER
	KOPS-GIL-00-00-DR-L-6001
PROJECT	NORTH
KOGARAH PUBLIC SCHOOL 24B GLADSTONE STREET, KOGARAH, NSW 2217	
SCALE 1:200	REV
0 1 2 3 4 5M	C





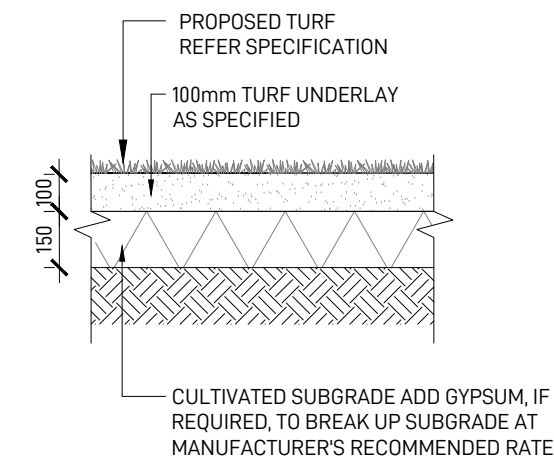
1 PLANTING ON GRADE

TYPICAL SECTION - SCALE 1:20



2 RAISED PLANTER

TYPICAL SECTION - SCALE 1:20



3 TURF

TYPICAL SECTION - SCALE 1:20

OUTLINE LANDSCAPE SPECIFICATION

GENERAL

MAINTENANCE SHALL MEAN THE CARE AND MAINTENANCE OF THE LANDSCAPE WORKS BY ACCEPTED HORTICULTURAL PRACTICE AS RECTIFYING ANY DEFECTS THAT BECOME APPARENT IN THE LANDSCAPE WORKS UNDER NORMAL USE. THE LANDSCAPE CONTRACTOR SHALL ATTEND THE SITE ON A WEEKLY BASIS TO MAINTAIN THE LANDSCAPE WORKS FOR THE FULL TERM APPROVED AT CC STAGE OF THE MAINTENANCE PERIOD (COMMENCING FROM PRACTICAL COMPLETION).

RUBBISH REMOVAL

DURING THE TERM OF THE MAINTENANCE PERIOD THE LANDSCAPE CONTRACTOR SHALL UNDERTAKE RUBBISH REMOVAL FROM THE SITE ON A WEEKLY BASIS TO ENSURE THE SITE REMAINS IN TIDY CONDITION.

WEED ERADICATION

WEED GROWTH THAT MAY OCCUR IN, PLANTED OR MULCHED AREAS IS TO BE REMOVED USING ENVIRONMENTALLY ACCEPTABLE METHODS I.E. NON-RESIDUAL GLYPHOSATE HERBICIDE, (E.G. 'ROUNDUP', APPLIED IN ACCORDANCE WITH THE MANUFACTURER'S DIRECTIONS) OR HAND WEEDING.

TREE REPLACEMENT

TREES SHALL SHOW SIGNS OF HEALTHY VIGOROUS GROWTH AND BE FREE FROM DISEASE AND NOT EXHIBIT SIGNS OF STRESS PRIOR TO HANDOVER TO THE CLIENT. ANY TREES OR PLANT THAT DIE OR FAIL TO THRIVE, OR ARE DAMAGED OR STOLEN WILL BE REPLACED. REPLACEMENT MATERIAL SHALL HAVE THE MAINTENANCE PERIOD EXTENDED IN ACCORDANCE WITH THE LANDSCAPE CONTRACT CONDITIONS. TREES AND PLANT MATERIALS SHALL BE EQUAL TO THE MINIMUM REQUIREMENTS OF SPECIES SPECIFIED AND APPROVED MATERIAL DELIVERED TO SITE. SHOULD THE CONDITION DECLINE FROM THE APPROVED SAMPLE THE SUPERINTENDENT RESERVES THE RIGHT TO REJECT THE TREE / PLANTS. FREQUENCY: AS REQUIRED.

PRUNING

SELECTIVE PRUNING MAY BE REQUIRED DURING THE ESTABLISHMENT PERIOD TO PROMOTE A BALANCED CANOPY STRUCTURE. THESE ACTIVITIES SHALL BE CARRIED OUT TO THE BEST HORTICULTURAL AND INDUSTRY PRACTICE. ALL PRUNED MATERIAL IS TO BE REMOVED FROM SITE.

IRRIGATION

A LOW VOLUME DRIP IRRIGATION SYSTEM MAY BE INSTALLED AT THE DISCRETION OF THE DEVELOPER. POSITION OF CONTROL BOX, SOLENOIDS AND IRRIGATION CONDUITS TO BE DESIGNED BY QUALIFIED IRRIGATION ENGINEER AT CC STAGE. CONTROLLERS SHALL BE MOUNTED ON A STABLE WALL, POWER RACK, OR FORMED AND CONSTRUCTED CONCRETE BASED PEDESTAL MOUNT. PERFORMANCE SPECIFICATION TO BE PROVIDED BY LANDSCAPE ARCHITECT, NOMINALLY 25MM DELIVERED TO PLANT AREAS EACH WEEK DURING ESTABLISHMENT (DEPENDING ON WEATHER CONDITIONS). AFTER ESTABLISHMENT, IRRIGATION RATES CAN BE DECREASED IN CERTAIN AREAS OF THE LANDSCAPE DEPENDING ON THE SPECIES.

WATERING

IMPLEMENT AN APPROPRIATE HAND WATERING REGIME IN AREAS NOT IRRIGATED IN ASSOCIATION WITH CURRENT WATERING PROGRAMME TO MAINTAIN PLANT HEALTH AND VIGOUR. THE PROGRAM SHALL REFLECT SEASONAL CONDITIONS AND PLANT SPECIES. FREQUENCY: WEEKLY OR AS REQUIRED.

DRAINAGE

ALL LANDSCAPE AREAS ARE TO HAVE POSITIVE DRAINAGE TO SW SYSTEMS. IF AREAS OF POOR DRAINAGE ARE IDENTIFIED ON SITE THEN THIS SHOULD BE BROUGHT TO THE SITE SUPERINTENDENTS ATTENTION. INSTALL AGG LINES IF REQUIRED.

SOILS

HORIZON A - GARDEN BEDS ON NATURAL GROUND
A SANDY LOAM TO CLAY LOAM TOPSOIL MIX DESIGNED FOR GENERAL PURPOSE, ON-GRADE LANDSCAPE GARDEN BED PLANTING OF GRASSES, WOODY AND HERBACEOUS ANNUALS AND PERENNIALS THAT HAVE HIGH NUTRIENT REQUIREMENT FOR SUSTAINED OPTIMUM GROWTH, AND ARE NOT SUBJECT TO COMPACTION BY PEDESTRIAN AND OTHER FOOT TRAFFIC. HEAVIER TEXTURED SOILS IN THIS SPECIFICATION MAY REQUIRE ENGINEERED SOLUTIONS WHERE EXCESSIVE WETNESS IS ANTICIPATED. NOTE THAT ORGANIC SOIL VARIANT SHOULD NOT BE CHOSEN FOR LOW P PLANTINGS AND SHOULD NOT BE USED

BELOW 300MM. PLANTING METHODS INCLUDE DIRECT SEEDING, TUBE AND POTTED SPECIMENS UP TO 45L

HORIZON B - LARGER POTTED PLANTING BELOW 300MM

A SANDY, WELL DRAINED MEDIUM WITH LOW ORGANIC MATTER FOR BACKFILLING BELOW 300MM FROM THE SURFACE IN LARGER POTTED SPECIMENS OVER 45L OR 400MM DEPTH OF ROOT BALL. SEMI-ADVANCED, ADVANCED AND SUPER ADVANCED TREE PLANTING. THE SPECIFICATION MAY USE A SMALL PROPORTION OF SITE WON TOPSOIL OR SUBSOIL, PROVIDED THE ORGANIC MATTER UPPER LIMIT IS NOT EXCEEDED.

CULTIVATION

ALL GARDEN BEDS TO BE CULTIVATED TO A MIN DEPTH OF 150MM AND TREE PITS TO THE DEPTH OF THE ROOT BALL. ONLY. IF ADDITIVES SUCH AS GYPSUM ARE REQUIRED CONDUCT THIS AFTER CULTIVATION INTO THE TOP 100MM OF SOIL.

PLANTING

ALL PLANTING TO BE GROWN TO NATSPEC SPECIFICATIONS. CONTRACTOR TO PREPARE SITE FOR PLANTING INCLUDING WATERING, HANDLING, SETTING OUT AND EXCAVATION. EXCAVATE A HOLE FOR EACH PLANT LARGE ENOUGH TO PROVIDE NOT LESS THAN 100MM ALL AROUND THE ROOT SYSTEM OF THE PLANT. FOR TREE PLANTING EACH HOLE SHALL BE DUG WITH A SHOVEL, BACKHOE OR SIMILAR TOOL. INDIVIDUAL HOLES SHALL BE EXCAVATED TO ALLOW ROOT SYSTEM TO SIT FLAT ON THE EXCAVATED HOLE AND 400MM TO EACH SIDE OF THE ROOT SYSTEM. BACKFILL PLANTING HOLES WITH EXISTING SITE SOIL AND TOPSOIL AS DESCRIBED IN SECTION 'SOIL'. PLANT / TREE SHALL BE SET PLUMB, WITH THE ROOT BALL SET SLIGHTLY BELOW THE FINAL SOIL LEVEL.

MULCHING

THE LANDSCAPE CONTRACTOR SHALL SUPPLY AND INSTALL 10MM PINE BARK MULCH TO ALL GARDEN BEDS SHOWN ON THE LANDSCAPE PLANS, TO A MINIMUM DEPTH OF 75MM. ALL MULCH IS TO BE FREE OF DELETERIOUS MATTER SUCH AS SOIL, WEEDS AND STICKS. MULCHED SURFACES ARE TO BE KEPT CLEAN AND TIDY AND FREE OF ANY DELETERIOUS MATERIAL AND FOREIGN MATTER. REINSTATE DEPTHS TO A UNIFORM LEVEL OF 75MM WITH MULCH AS SPECIFIED, MULCH TO BE FREE OF ANY WOOD MATERIAL IMPREGNATED WITH CCA OR SIMILAR TOXIC TREATMENT. MAINTAIN WATERING RINGS AROUND TREES. TOP UP MULCH LEVELS PRIOR TO HANDOVER TO CLIENT.

TURFING

THE LANDSCAPE CONTRACTOR SHALL SUPPLY AND INSTALL SAPHIRE BUFFALO TURF IN STRETCHER PATTERN TO ALL TURF AREAS SHOWN ON THE LANDSCAPE PLANS AND IS TO FINISH FLUSH WITH ADJACENT SURFACES. TURF TO BE A MIN THICKNESS OF 50MM WITH A 40MM MOWING HEIGHT. CONTRACTOR TO ALLOW FOR FERTILISING, LAYING, TAMPING, WATERING, TOP DRESSING, MAINTENANCE AND MOWING. THE LANDSCAPE CONTRACTOR SHALL SUPPLY AND INSTALL TURF UNDERLAY UNDER ALL TURF AREAS, CONSISTING OF 100MM THICK LAYER OF SCREENED TOP SOIL.

PEST AND DISEASE CONTROL

THE LANDSCAPE CONTRACTOR SHALL SPRAY FOR PESTS AND DISEASE INFESTATIONS WHEN THE PEST AND FUNGAL ATTACK HAS BEEN POSITIVELY IDENTIFIED AND WHEN THEIR POPULATIONS HAVE INCREASED TO A POINT THAT WILL BECOME DETRIMENTAL TO PLANT GROWTH. APPLY ALL PESTICIDES TO MANUFACTURER'S DIRECTIONS. FREQUENCY: WEEKLY INSPECTION

FERTILISING

PELLETS SHALL BE IN THE FORM INTENDED TO UNIFORMLY RELEASE PLANT FOOD ELEMENTS FOR A PERIOD OF APPROXIMATELY NINE MONTHS EQUAL TO SHIRLEYS KOKEI PELLETS, ANALYSIS 6.3:1.8:2.9 OR SIMILAR APPROVED. KOKEI PELLETS SHALL BE PLACED AT THE TIME OF PLANTING TO THE BASE OF THE PLANT, 50MM MINIMUM FROM THE ROOT BALL AT A RATE OF TWO PELLETS PER 300MM OF TOP GROWTH TO A MAXIMUM OF 8 PELLETS PER TREE. GENERALLY CHECK FOR SIGNS OF NUTRIENT DEFICIENCIES (YELLOWING OF LEAVES, FAILURE TO THRIVE), AND ADAPT FERTILISER REGIME TO SUIT. FERTILISER SHOULD BE APPLIED AT THE BEGINNING AND THE END OF THE (SUMMER) GROWING SEASON.

MAINTENANCE SCHEDULE

	JAN	FEB	MAR	APR	MAY	JUN	JUL	AUG	SEP	OCT	NOV	DEC
INSPECTIONS	2M		2M		2M		2M		2M		2M	
WATERING	W	W	W	W		W	W	W	W	W	W	W
WEED AND PEST MANAGEMENT	AR	AR	AR	AR	AR	AR	AR	AR	AR	AR	AR	AR
LITTER REMOVAL	2M		2M		2M		2M		2M		2M	
REMOVAL OF DEAD/DYING TREE LIMBS	2M		2M		2M		2M		2M		2M	
PLANT REPLACEMENT IF REQUIRED	AR	AR	AR	AR	AR	AR	AR	AR	AR	AR	AR	AR
MULCHING	AR	AR	AR	AR	AR	AR	AR	AR	AR	AR	AR	AR
TREE STAKE ADJUSTMENTS	AR	AR	AR	AR	AR	AR	AR	AR	AR	AR	AR	AR
FERTILISING	AR	AR	AR	AR	AR	AR	AR	AR	AR	AR	AR	AR
PLANTING ESTABLISHMENT PERIOD - 12 MONTHS												
LANDSCAPE MATERIAL ESTABLISHMENT - 12 MONTHS												
KEY W-WEEKLY, 2M- EVERY TWO MONTHS, AR- AS REQUIRED												
THE CONTRACTOR IS TO ALLOW 52 WEEKS PLANTING ESTABLISHMENT PERIOD FROM THE DATE OF PRACTICAL COMPLETION. CONTRACTOR TO MAINTAIN A LOG BOOK TO KEEP A RECORD OF MAINTENANCE EVERY MONTH. REPLACEMENTS OF FAILED, DAMAGED OR STOLEN PLANTS TO BE CARRIED OUT DURING THE MAINTENANCE PERIOD. IRRIGATION SYSTEMS TO BE INSTALLED AND MAINTAINED DURING THE MAINTENANCE PERIOD. LANDSCAPE MAINTENANCE REPORT SHALL BE SUBMITTED TO THE PRINCIPLE CERTIFYING AUTHORITY BY THE CONTRACTOR.												

LANDSCAPE ARCHITECT

GROUND INK
LANDSCAPE ARCHITECTS

SUITE 19, 56 NERIDAH ST, CHATSWOOD NSW 2067 PH. (02) 9411 3279
WWW.GROUNDINK.COM.AU ABN 55 163 025 456 ACN 163 025 456
© GROUND INK PTY LTD THIS DESIGN AND DRAWING IS PROTECTED BY COPYRIGHT.

NOTE

VERIFY ALL DIMENSIONS ON SITE BEFORE COMMENCING WORK. REPORT ALL DISCREPANCIES TO LANDSCAPE ARCHITECT PRIOR TO CONSTRUCTION. FIGURED DIMENSIONS TO BE TAKEN IN PREFERENCE TO SCALED DRAWINGS. ALL WORK IS TO CONFORM TO RELEVANT AUSTRALIAN STANDARDS AND OTHER CODES AS APPLICABLE. LOCATION OF UNDERGROUND SERVICES TO BE PROVEN ON SITE AND PROTECTED IF NECESSARY PRIOR TO CONSTRUCTION. DIAL BEFORE YOU DIG. PLANT SPECIES AND QUANTITIES SHOWN ARE INDICATIVE ONLY AND ARE SUBJECT TO CHANGE BASED ON FUTURE PROJECT REQUIREMENTS.

ISSUE	DATE	DESCRIPTION	DRAWN	CHECKED
A	19.12.24	100% SCHEMATIC	AG	RL
B	29.01.25	100% SCHEMATIC	AG	RL
C	14.03.25	REF	QN	RL

DRAWING TITLE

LANDSCAPE DETAILS

DRAWING NUMBER

KOPS-GIL-00-00-DR-L-9001

PROJECT
KOGARAH PUBLIC SCHOOL
248 GLADSTONE STREET, KOGARAH, NSW 2217

SCALE 1:20@A1
0 0.1 0.2 0.3 0.4 0.5m

REV
C

